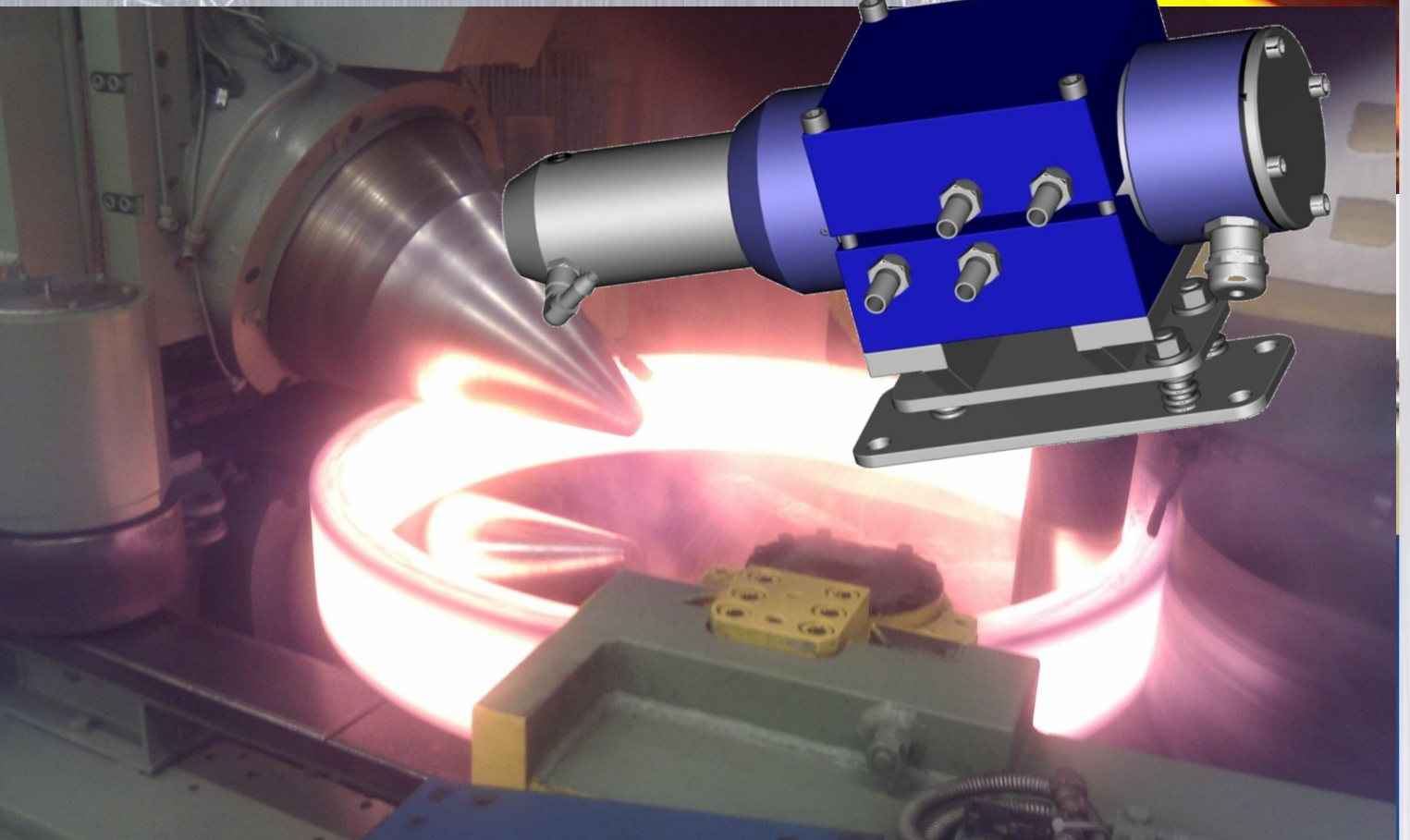


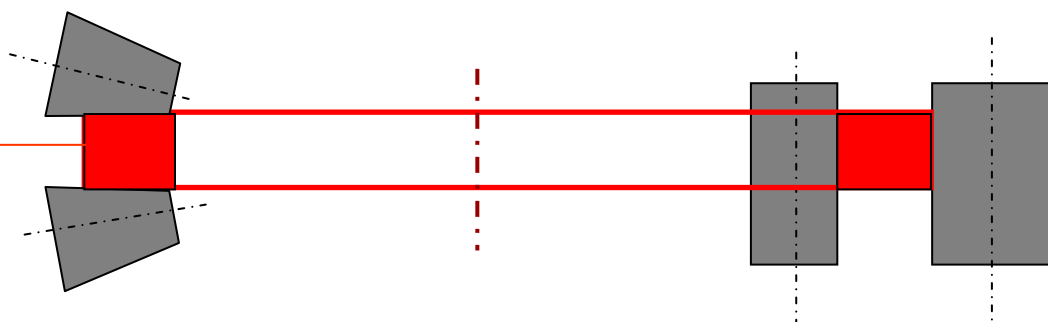
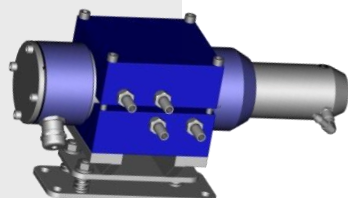
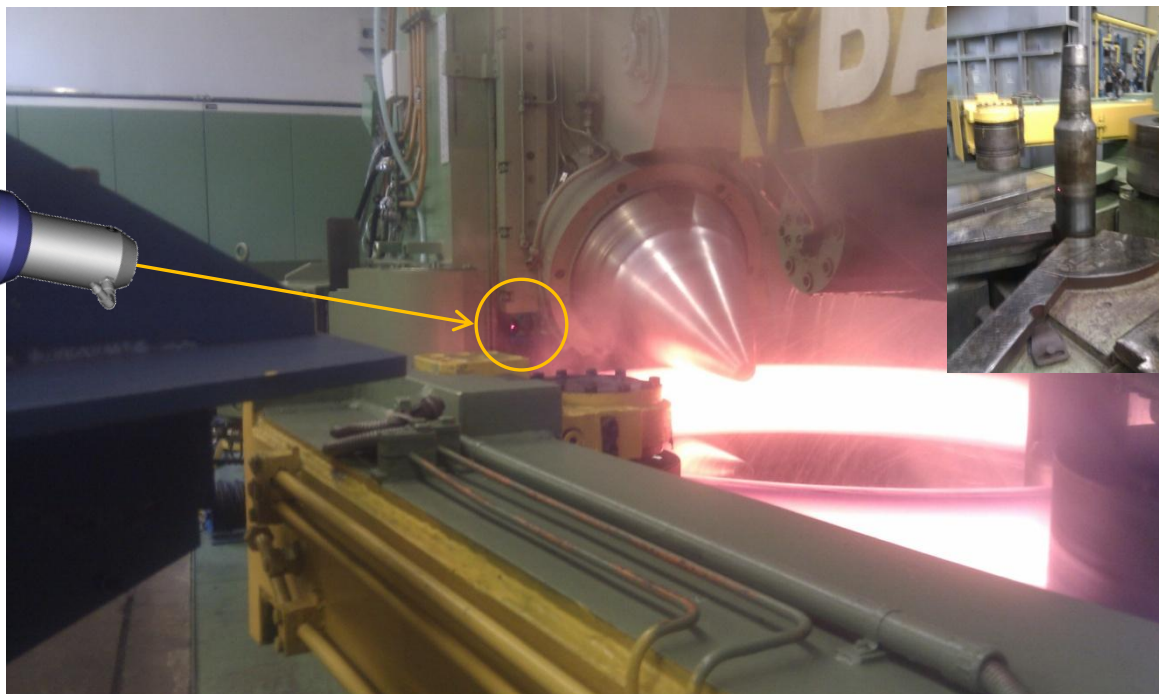
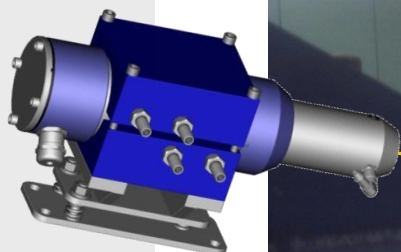
LMC-HRS-50
Hot Ring Rolling
Distance Sensor



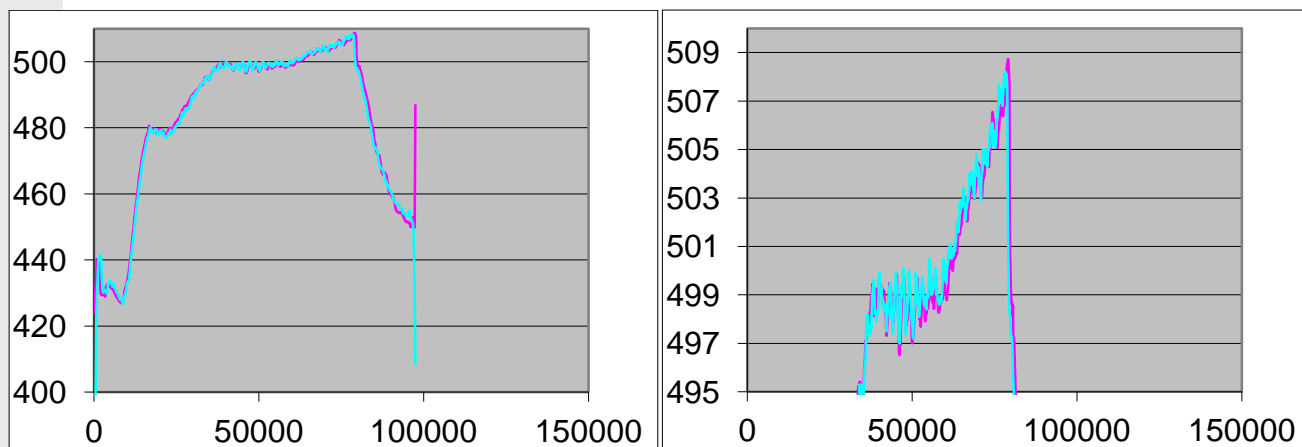
**Experts for contactless
measuring technologies**



OUTSTANDING COMPACT LONGE RANGE DISTANCE SENSOR DESIGNED EXCLUSIVLY FOR RING ROLLING



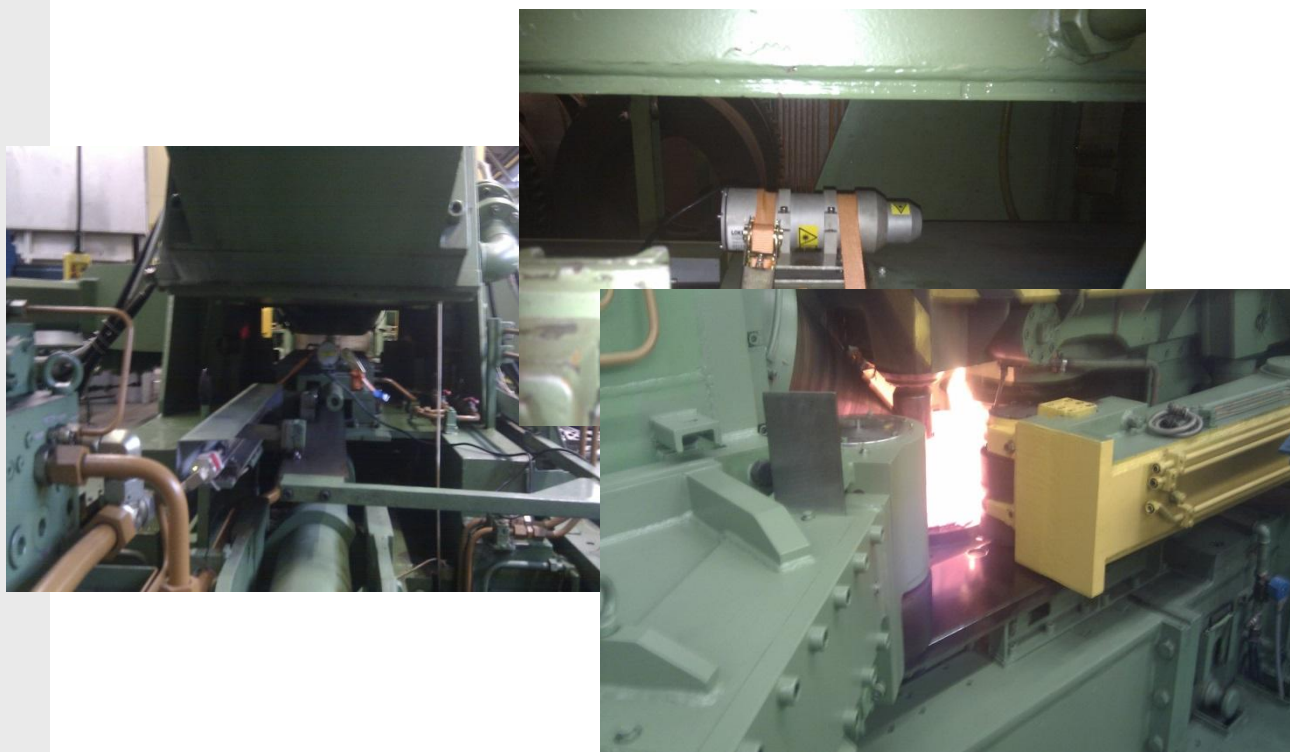
Measuring Roll – LMC-HRS-50 Comparisson made by SMS MEER



Blue: LMC-HRS-50

Purple: Measuring Roll

Result: Outstanding performance of the LMC-HRS-50



Due to the compact design, it's also easily possible to install 2 or more gages for shape or profile measurement of the rings

LMC-HRS-50 Laser Distance Measuring Device up to 1400°C hot steel ring targets

Precise – Robust – Reflectorless

- Made for target temperature up to 1400°C hot steel
- Measures distances within millimetre accuracy
- Detects movements
- Superb filtering functions
- 100 Hz Output Rate

The LMC—HRS-50 is an opto-electronic distance measuring module specially designed for ring rolling application.

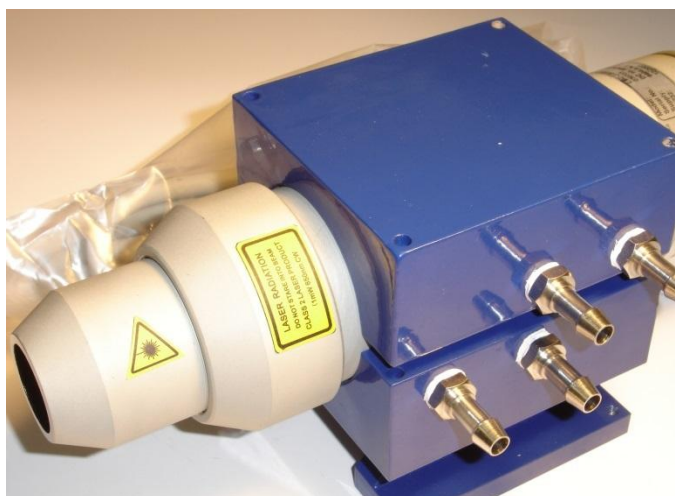
The module operates on basis of non-contact comparative phase measurement with amplitude modulation. The Laser diode (cw operation) has a divergence of 0.6 mrad for measurement with pinpoint accuracy.

Measuring Output Rate up to 100Hz. Filtering functions like measurement window, error and application specific value check.

The measuring range on steel surfaces can reach up to 20m (or more depending on target reflectivity).

The sensor alignment can be easily achieved with the help of the red pilot laser and the included 3-point, spring damped bracket which also improves the vibration protection of the gage.

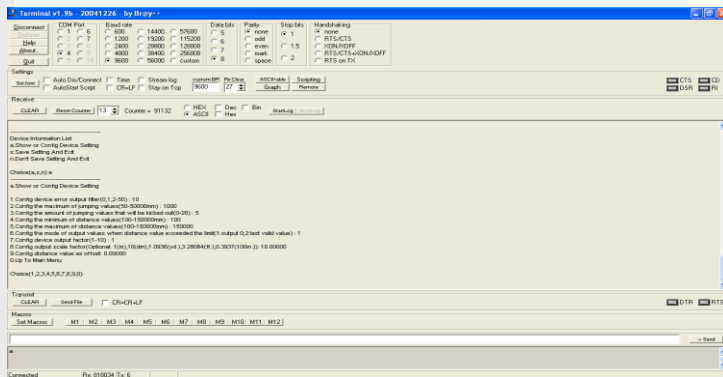
The standard includes also a water cooling jacket (depending on the conditions it can be used also as air cooling jacket) as well as an air-purged front tube.



Specifications:

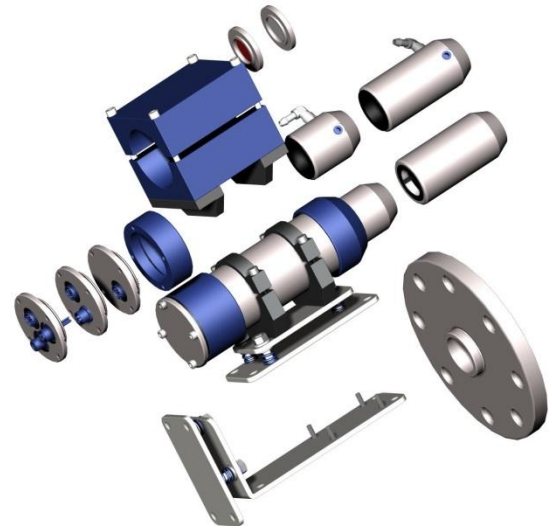
Measuring range: *1	0.2 to 20 m
Measuring accuracy: *2	± 2 mm
Repeatability:	≤ ± 0,5 mm
Measuring resolution:	Depends on scale factor (1 mm / SF 1; 0,01mm / SF 100)
Measurement rate:	Depending on type max. 100 Hz
Laser divergence:	0.6 mrad
Laser classification:	≤ 5 mW nach IEC 825-1, Laser Class 3R (650 nm)
Interface:	Serial: RS232 or RS 422, Analogue Output 4...20 mA, Optional: EtherNet, Wlan, ProfiBus, Bluetooth
Switching output:	1 digital
Temperatur range:	-10 °C bis + 60 °C (-40° with heating, 120°C with water cooling)
Power supply:	10 - 30 VDC ; <2 W bei 24 VDC
Bracket:	Three-point bracket spring cushioned
Dimensions:	(260 x 100 x 150) mm (L x B x H)
Weight:	ca. 4,3 kg
Protection class:	IP 66
MTTF	40.000 h
*1	dependent on target reflectivity, stray light influences and atmospheric conditions
*2	statistical spread 95%

EASY setup via Terminal Program

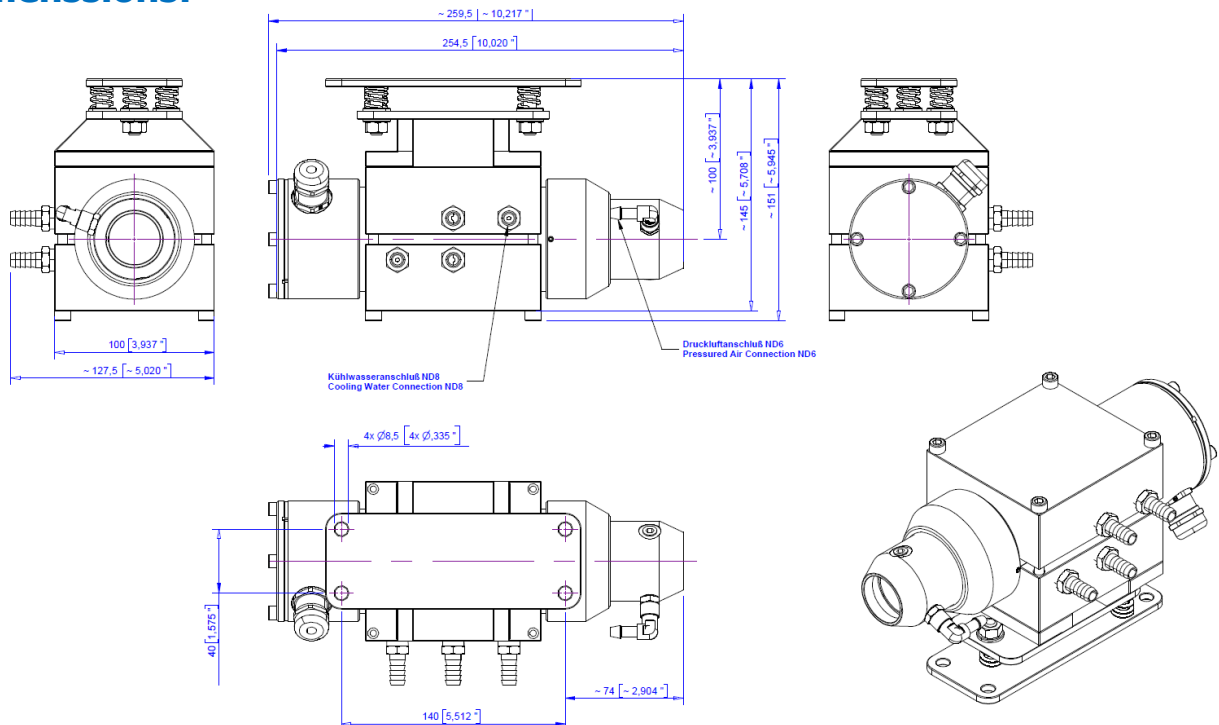


Options:

- Exchange Window
- Double long front tube for better dust and spray material protection
- Water cooling for temp. up to +120°C
- Heat shield
- Air Purge
- Heating for Temperatures down to -40 °C
- Plug versions
- ProfiBus, EtherNet, WLAN
- Custom made outputs, interfaces and housings



Dimensions:



Kempf GmbH & Co KG

Otto-Hahn-Str.5
69190 Walldorf / Germany
Homepage: www.loke.de

Tel: ..49/6227/8220-0
Fax: ..49/6227/8220-10
E-Mail: Info@loke.de